



**Logic Software Inc.**  
E-mail: [info@logicsoftware.net](mailto:info@logicsoftware.net)  
URL: <http://www.logicsoftware.net>

---

## Easy Projects .NET Installation Guide

The automatic Easy Projects .NET installer is used for both 30-day trial and upgrades from the versions 4.x, 5.x, 6.x and 7.x.

## System Requirements

Before proceeding with Easy Projects .NET installation, please make sure you have the following prerequisites installed:

**Operating System** (one of the following): Windows 2008/2008R2, Windows 2003, Windows 7 Ultimate, Professional, Enterprise, Windows Vista Enterprise.

### Internet Information Services (IIS)

Installation instructions:

<http://support.myeasyprojects.net/KB/a39/i-run-setup-it-tells-me-i-need-iis-50-what-is-that.aspx>

### .NET Framework 4

Installation instructions:

<http://www.microsoft.com/download/en/details.aspx?displaylang=en&id=17718>

### MS SQL Server 2008 R2/ 2008/2005 or MS SQL Express 2008 R2 /2008/2005

MS SQL Server Express 2008 (free edition) with management tools download link:

32-bit version: <http://go.microsoft.com/?linkid=9729746>

64-bit version: <http://go.microsoft.com/?linkid=9729747>

#### **IMPORTANT NOTE:**

MS SQL server should be configured to use SQL server (mixed) authentication, remote connections should be allowed, both login for 'sa' user and TCP/IP protocol should be enabled.

## License Agreement

Run Easy Projects .NET setup. Carefully read the License Agreement that will appear on the first screen. After accepting Easy Projects .NET license agreement, you will be transferred to the Installation type and Target folder page.

## Files and database installation

The first step allows you to choose a database installation method. There are three types to choose from as shown in Figure 1:

1. **Clean install.** Easy Projects .NET will be installed with empty database which you can fill in on your own.
2. **Demonstration.** Easy Projects .NET will be installed with sample data that will help you to get acquainted with the application without spending time on filling in project data.
3. **Upgrade.** If you have already an installed version of Easy Projects .NET and want existing data to be saved then choose this method and it will upgrade EP.NET files and database. Select a folder of existing version as the target folder; it will save you a time because all current settings will be taken from the configuration file.

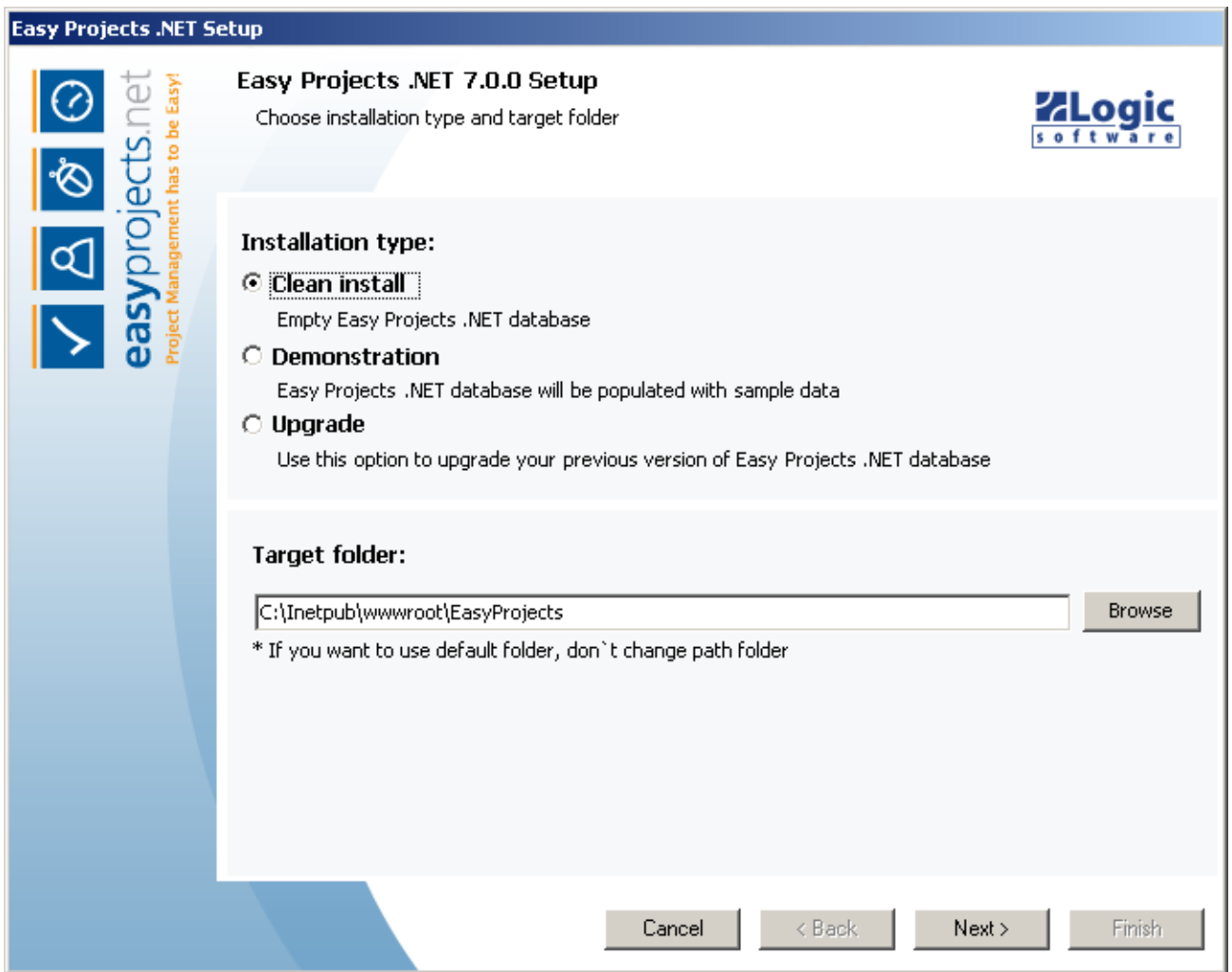


Figure 1: Files and database installation: choose Installation type and Target folder.

## Data storage options

On the next step (Figure 2) you have to choose a storage method for attachments and a method for session state storage. Attachments storage can be of two types:

1. **Database.** Leave the default “Database” option selected if you want attachments to be stored in a database rather on a hard disk.
2. **Hard disk.** If you decide to store attachments on a disk you should specify a folder on a disk where files will be stored.

By default the “*Use SQL Server session state*” option is enabled. In this case a session will be stored on SQL server. If the option is disabled a session will be stored on Web server. It’s recommended to leave the option enabled – it will help to avoid session loss errors.

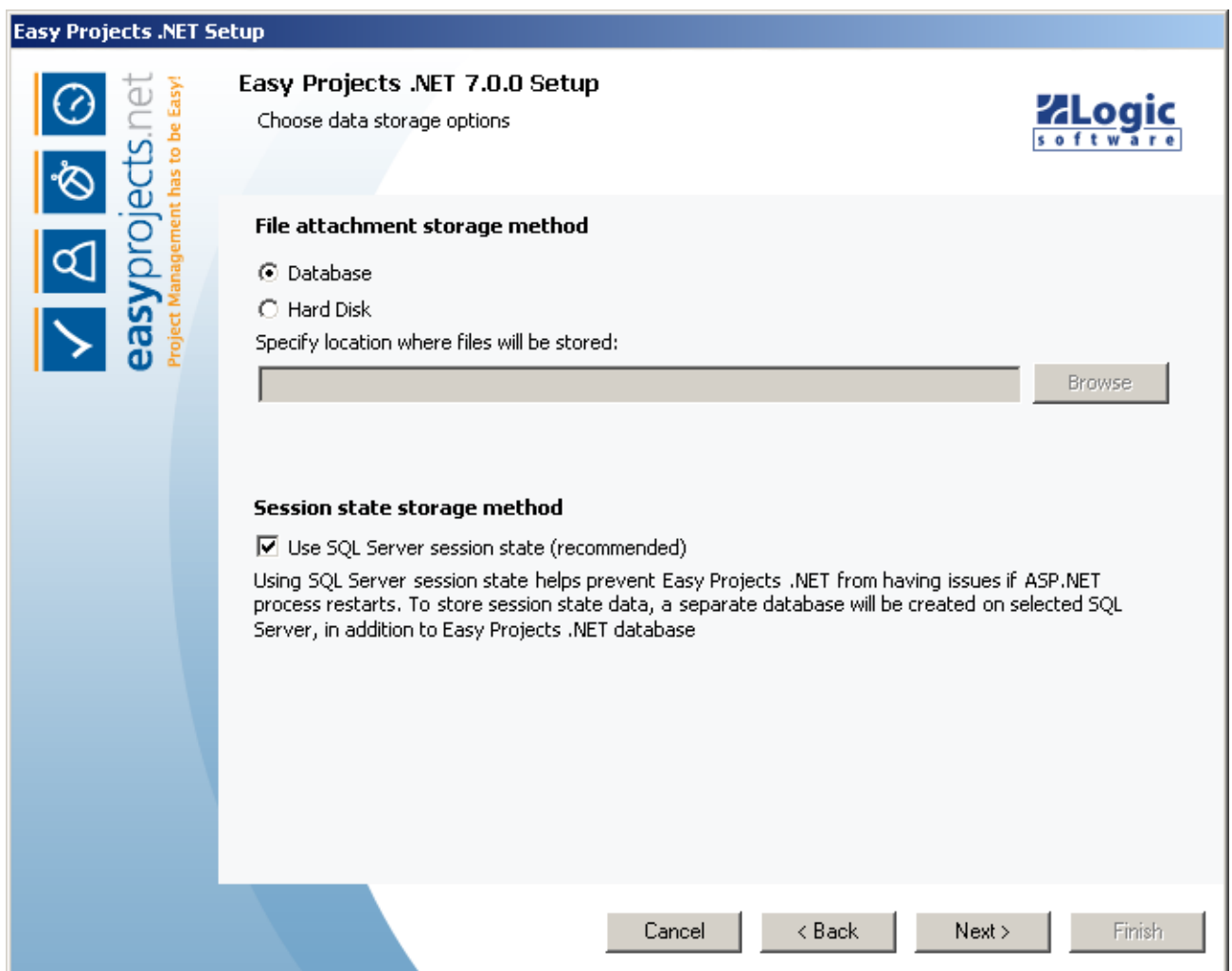


Figure 2: Choose data storage options.

## Database installation options

On the next installer screen you input SQL Server information:

*SQL server name*, *user name* and *password* and *database name* as shown in Figure 3.

On this step you will be able to test the connection to the chosen database using entered parameters and make sure that the data you have entered is correct. This information will be used by Easy Projects.NET for database access.

Please note that it's required to use SQL server administrator ('sa') for the installation.

The screenshot shows the 'Easy Projects .NET Setup' dialog box. The title bar reads 'Easy Projects .NET Setup'. The main window has a blue header with the 'easyprojects.net' logo and the tagline 'Project Management has to be Easy!'. The 'Logic software' logo is in the top right corner.

The main content area is titled 'Easy Projects .NET 7.0.0 Setup' and 'Choose your database installation options'. It is divided into two sections:

**SQL server options:**

- SQL Server:** A dropdown menu showing 'TESTW2K3R2ENT\SQL2K8'.
- Database name:** A text box containing 'EasyProjects' and a 'Browse' button.
- User name:** A text box containing 'sa'.
- Password:** A text box containing '\*\*\*\*\*'.
- Use existing Easy Projects .NET database (it will not be modified)
- Test connection** button.

**Easy Projects .NET Administrator Password**

- User name:** A text box containing 'Administrator'.
- E-Mail (mandatory):** A text box containing 'admin@myserver.com'.
- Use Default Administrator password
- Use My Own Administrator password
- admin** (text box)
- Confirm password** (text box)

At the bottom, there are four buttons: 'Cancel', '< Back', 'Next >', and 'Finish'.

Figure 3: Database Installation: configure.

While on this page you can change the Administrator default password to your own with the help of which you will logon to the system.

In Demonstration install you can change the default password **epdemo** to any that suits you. It will be applicable to all users.

Clean install comes only with the Administrator account whose default password **admin** you can change to any that is convenient for you.

If you have chosen Upgrade install then you can logon to the system using the password that you used in your previous version of Easy Projects .NET.

*E-Mail* field is required. It will be used for notification e-mails.

**NOTE:**

If you prefer to use a specific SQL server user for EP.NET after the installation is finished), that user should have “db\_owner” permission for the EP.NET, “ASPState” and “tempdb” databases.

Refer to the KB article for details at <http://support.myeasyprojects.net/KB/a65/i-created-user-epuser-on-my-sql-server-epnet-which.aspx>

## IIS Configuration

The next screen as shown in Figure 4 allows you to choose a web-site and create a virtual directory Easy Projects .NET will be configured to run from. Having made this choice under the inscription ‘Easy Projects .NET will be installed to the following URL’ you will see the URL at which your installed version of Easy Projects .NET will be available. This URL will appear once again on the last screen of the installer.

*External Easy Projects .NET URL* field allows you to specify correct URL which all links to objects will have in notifications e-mails. You may change a default machine name in the URL to a site address with a domain name which will be recognized when a link is opened from the outside network.

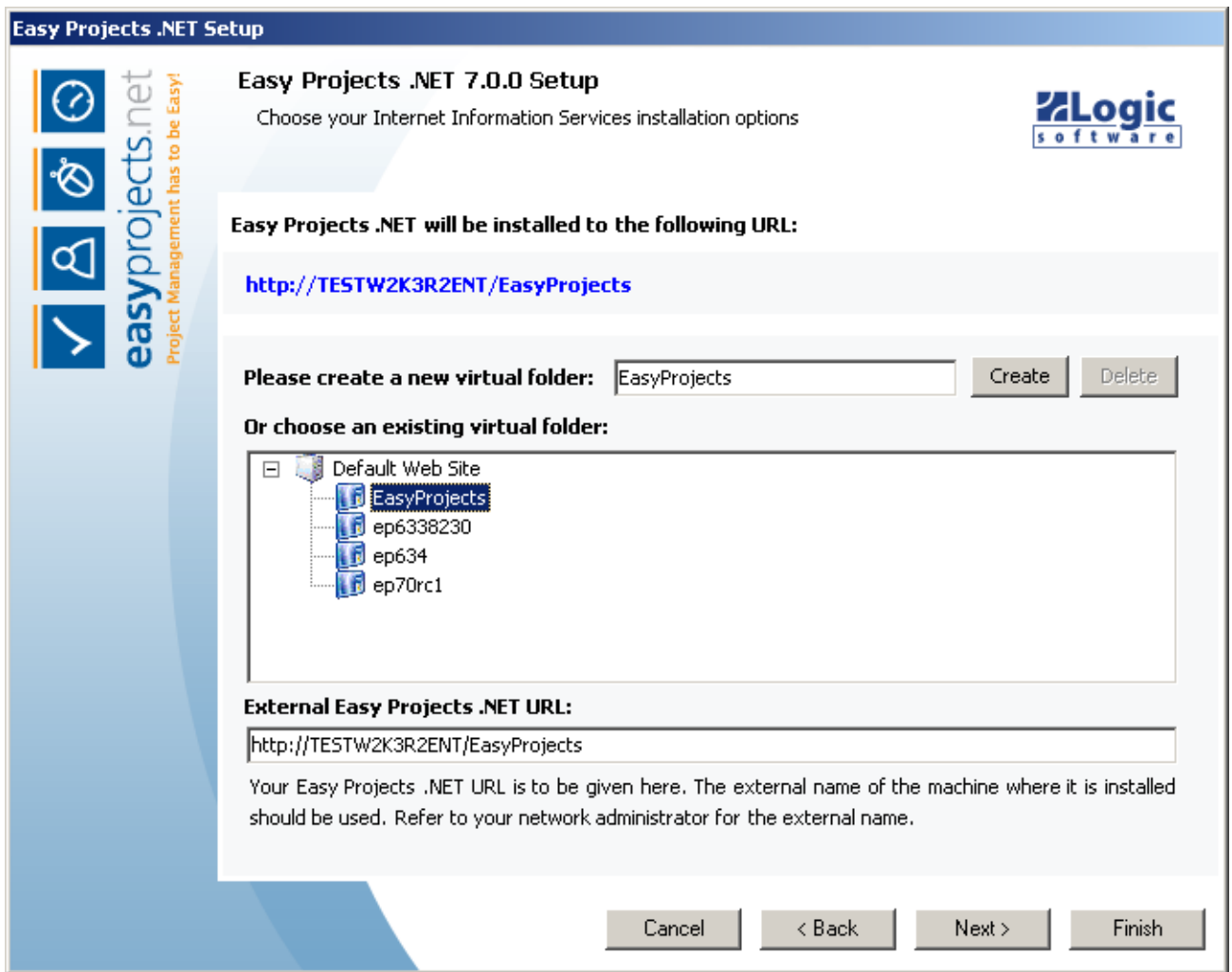


Figure 4: Internet Information Services setup.

**NOTE:**

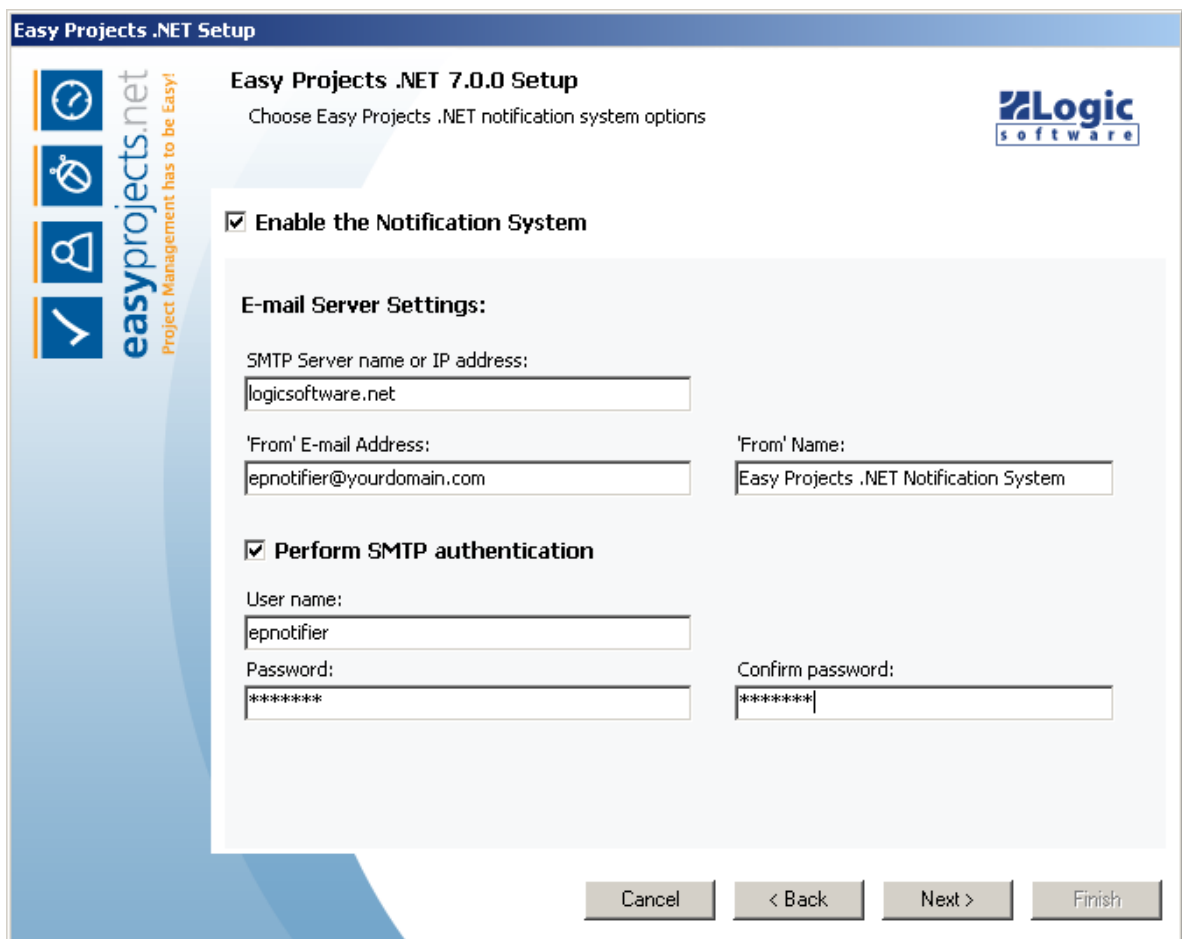
Easy Projects .NET application will be installed under chosen Web site, a dedicated application pool will be created in IIS.

## Configuring Easy Projects .NET

The next installation screen as shown in Figure 5 provides you with the opportunity to enable Easy Projects .NET E-mail Notification System. You should specify *SMTP Server name or its IP address* and *'From' E-mail Address*. The *'From' name* field is optional. These settings will be used by the Notification System for sending e-mail messages.

There are some e-mail servers that require SMTP authentication before performing any operation. In this case you should check the box *'Perform SMTP authentication'* and specify a *User name*, his *Password* and *Confirm the password* values.

If you don't know whether you need to perform SMTP authentication then ask your system administrator.



The screenshot shows the 'Easy Projects .NET Setup' dialog box. The title bar reads 'Easy Projects .NET Setup'. The main window has a blue header with the text 'Easy Projects .NET 7.0.0 Setup' and 'Choose Easy Projects .NET notification system options'. The Logic Software logo is in the top right. On the left, there is a vertical sidebar with four icons (clock, shield, person, checkmark) and the text 'easyprojects.net Project Management has to be Easy!'. The main content area contains the following settings:

- Enable the Notification System**
- E-mail Server Settings:**
  - SMTP Server name or IP address:
  - 'From' E-mail Address:
  - 'From' Name:
- Perform SMTP authentication**
  - User name:
  - Password:
  - Confirm password:

At the bottom, there are four buttons: 'Cancel', '< Back', 'Next >', and 'Finish'.

Figure 5: Easy Projects .NET Notification System.

**NOTE:**

In order notification emails to be sent a MS SQL Server machine should be allowed to send outbound SMTP traffic.

## Finishing Easy Projects .NET setup

On this step of the installation process you will be able to revise all the settings you have specified during the previous steps. Click on the “Finish” button to save them or the “Back” button to make necessary changes as shown in Figure 6.

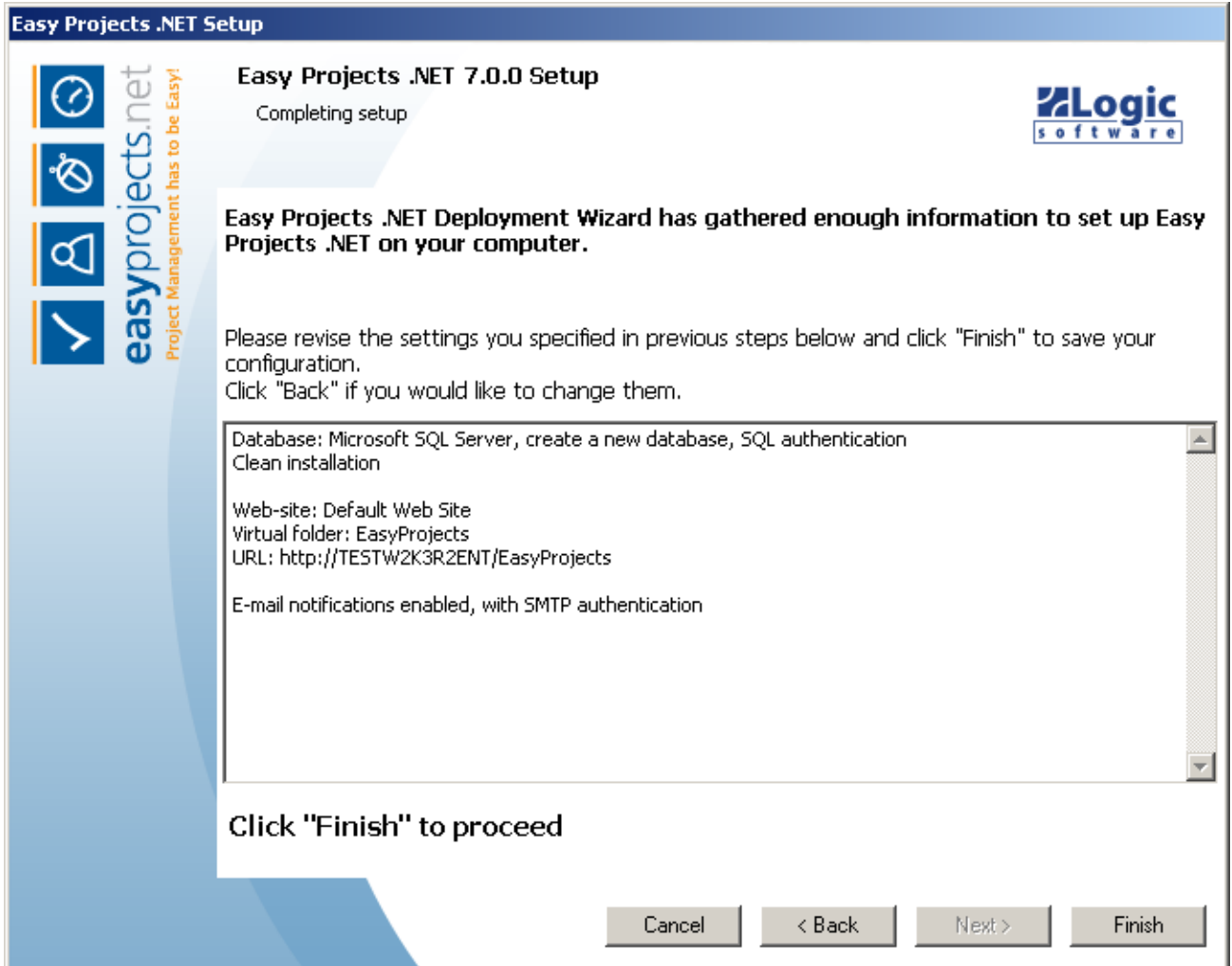


Figure 6: Easy Projects .Net Deployment Wizard.

## Final Step

Congratulations! You have finished all configuration tasks and the installer will perform all the necessary operations to deploy Easy Projects .NET on the target computer.

On the last screen you will see the URL where you can access your application.

Easy Projects .NET Web site will be available by the address similar to: <http://youraddress.com/EasyProjects>, where *youraddress.com* is a network address of the computer where system was installed and *EasyProjects* is a virtual directory name that you specified during the **IIS Configuration** step.

### **PLEASE REMEMBER:**

By default Easy Projects .NET **Clean Installation** comes with the only Administrator account that should be used to create other users. Please use *Administrator* as a username and *admin* as a password.

## Additional Help

*For the most current FAQ go to the Easy Projects .NET web site:*

<http://www.easyprojects.net/faq.asp>

*Easy Projects .NET Knowledgebase is located at:*

<http://www.easyprojects.net/KB/>

*Easy Projects .NET online help:*

<http://www.easyprojects.net/help/>